

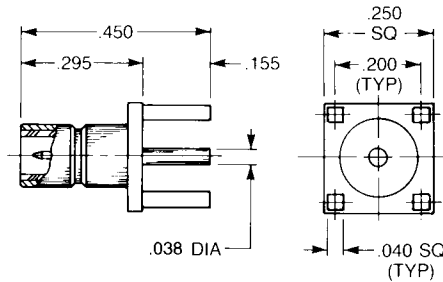
# SMB P.C. Board Receptacles

## Straight Jacks

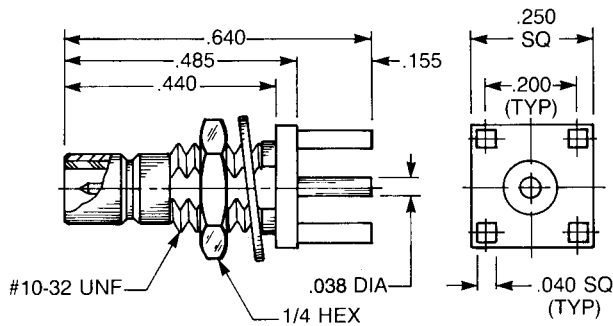
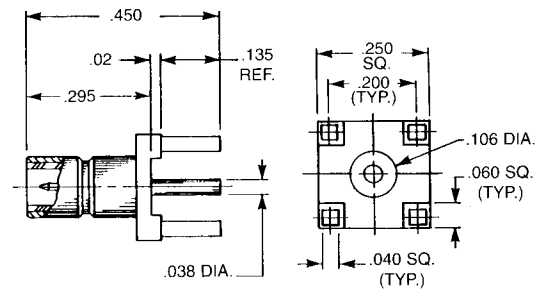
### Straight Male Jack Receptacle

2009-1511-000 (Gold plated)  
2009-7511-000 (Nickel plated)

QPL version available  
(M39012/95)



2009-1511-050 (Gold plated)  
2009-7511-050 (Nickel plated)



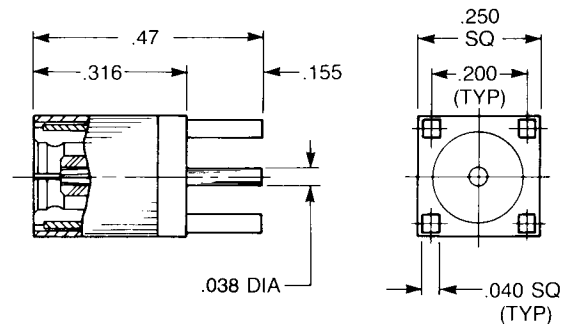
### Bulkhead Mounted Straight Male Jack P.C. Board Receptacle

2109-1511-000 (Gold plated)  
2109-7511-000 (Nickel plated)

## Straight Plug

### Straight Female Plug Receptacle

2025-1511-000 (Gold plated)  
2025-7511-000 (Nickel plated)



# SMB P.C. Board Receptacles

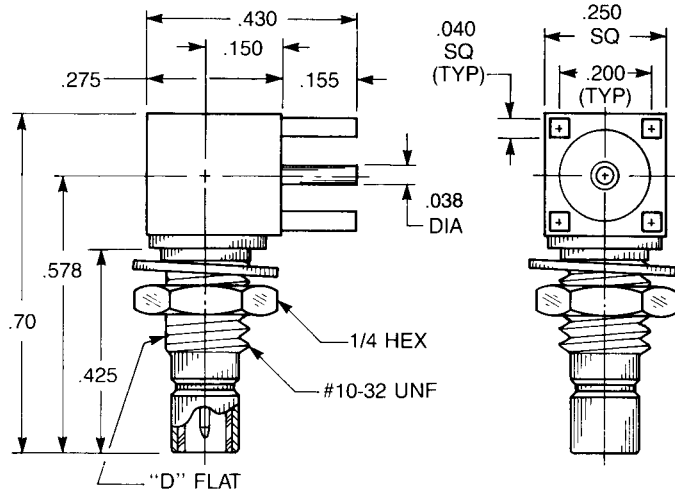
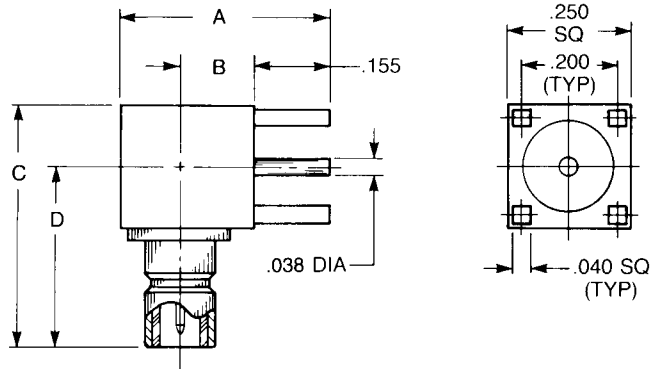
## Right Angle Jacks

### Right Angle Male Jack Receptacle

A	B	C	D
.43	.15	.50	.38
2010-1511-000 (Gold plated)			
2010-7511-000 (Nickel plated)			

A	B	C	D
.50	.215	.56	.437
2010-1511-002 (Gold plated)			
2010-7511-002 (Nickel plated)			

QPL version available (M39012/96)



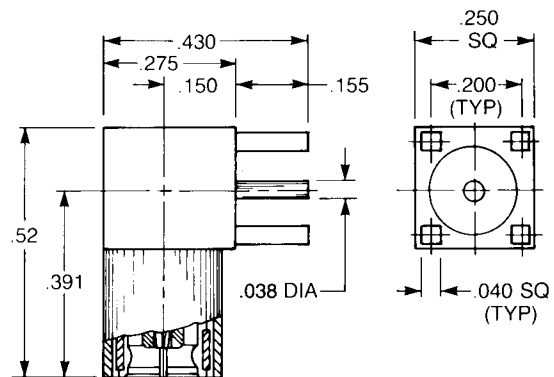
### Bulkhead Mounted Right Angle Male Jack P.C. Board Receptacle

2110-1511-000 (Gold plated)  
2110-7511-000 (Nickel plated)

## Right Angle Plug

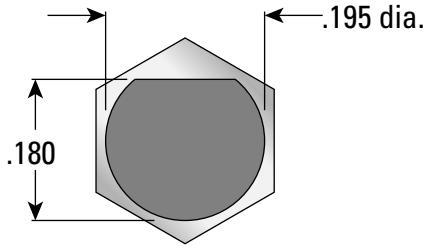
### Right Angle Female Plug Receptacle

2042-1511-000 (Gold plated)  
2042-7511-000 (Nickel plated)



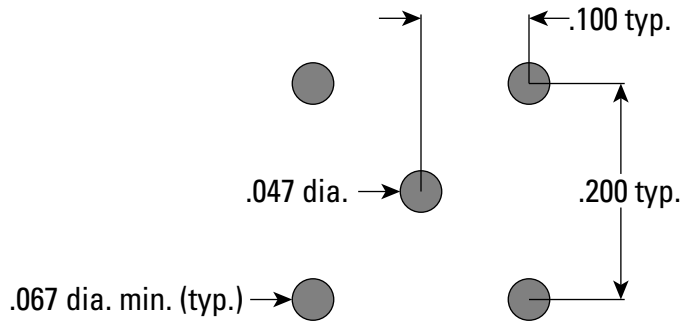
# Mounting Dimensions

## Bulkhead Receptacles



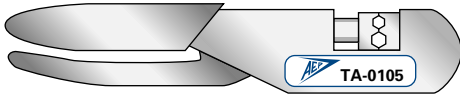
Flat of mounting surface is aligned with body hex as shown.

## P.C. Board Receptacles



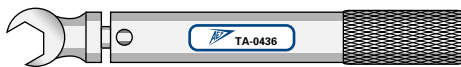
# Assembly Tooling

## Crimp tool



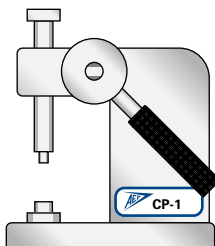
DESCRIPTION	AEP P/N
Crimp tool with .105" and .128" hex dies	TA-0105

## Torque Wrench



DESCRIPTION	AEP P/N
Torque wrench with 7/32" jaws for SMB connector backnuts; 95 inch-ounces torque	TA-0436

## Capping Press



DESCRIPTION	AEP P/N
Capping tool (arbor press) with base for SMB right angle plugs	CP-1
Capping tool (arbor press) with base for SMB right angle jacks	CP-6